

SAN SABA ESTANCIA

1,014± ACRES | SAN SABA COUNTY, TEXAS



TEXAS
RANCH
SALES, L.L.C.

This 1,014± acre Central Texas cattle ranch features three homes with numerous cattle improvements, good water features and lush farm fields. San Saba Estancia is located about seven miles from San Saba, Texas, with frontage on Highway 190 and County Road 204.

SAN SABA ESTANCIA

1,014± ACRES | SAN SABA COUNTY, TEXAS



- BEAUTIFUL CATTLE RANCH
- 10± STOCK TANKS
- 7± MILES TO SAN SABA
- HILLTOP VIEWS
- BORDERS HWY 190 & COUNTY ROAD 204
- 50% FARM FIELDS
- 3 HOMES
- NUMEROUS HOMESITE LOCATIONS
- 2 SETS OF CATTLE PENS
- LOW FENCED WITH CROSS FENCING
- 3 WELLS
- EXCELLENT DUCK HUNTING



SCAN TO VIEW ON THE WEB



SCAN TO WATCH VIDEO

WATER FEATURES



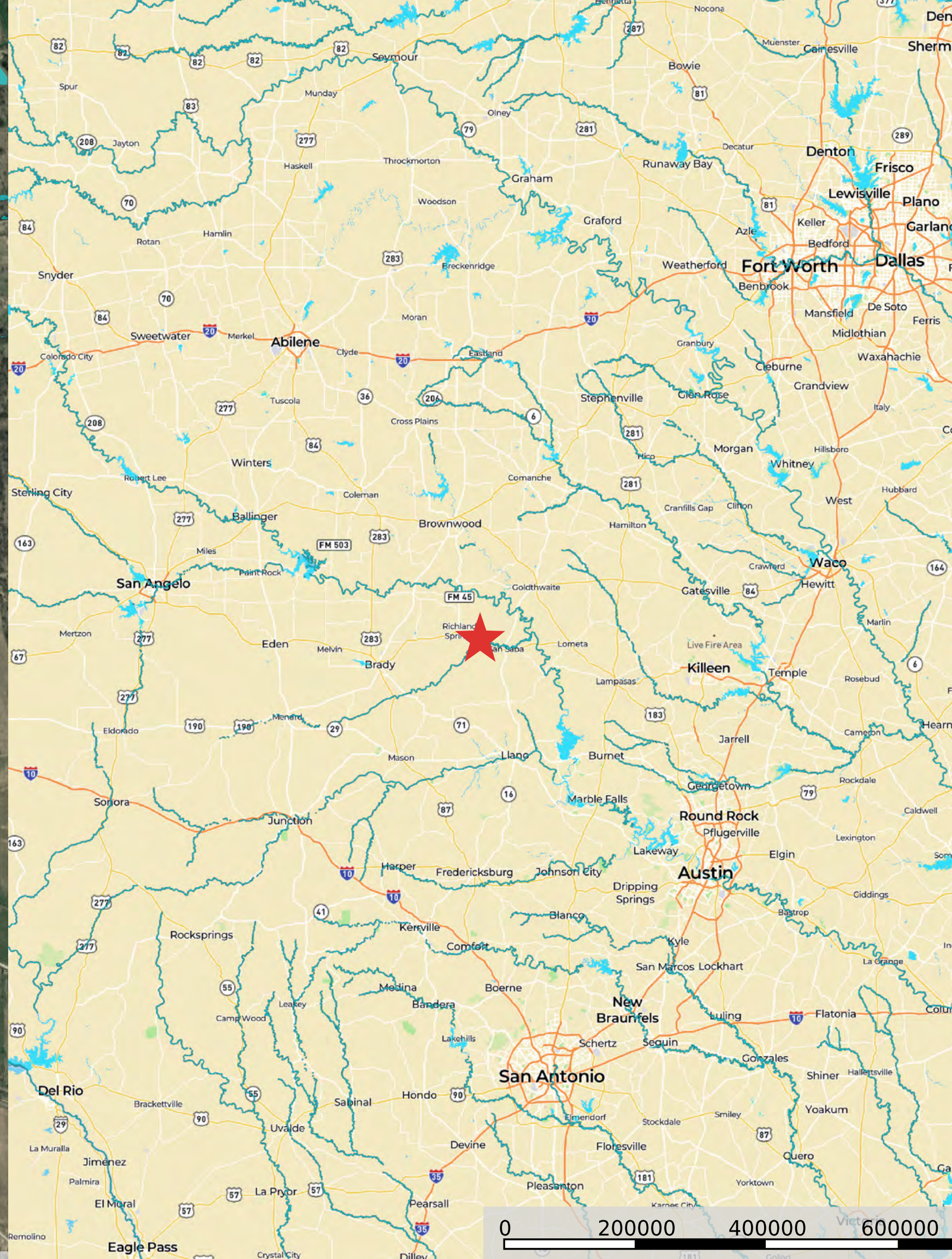
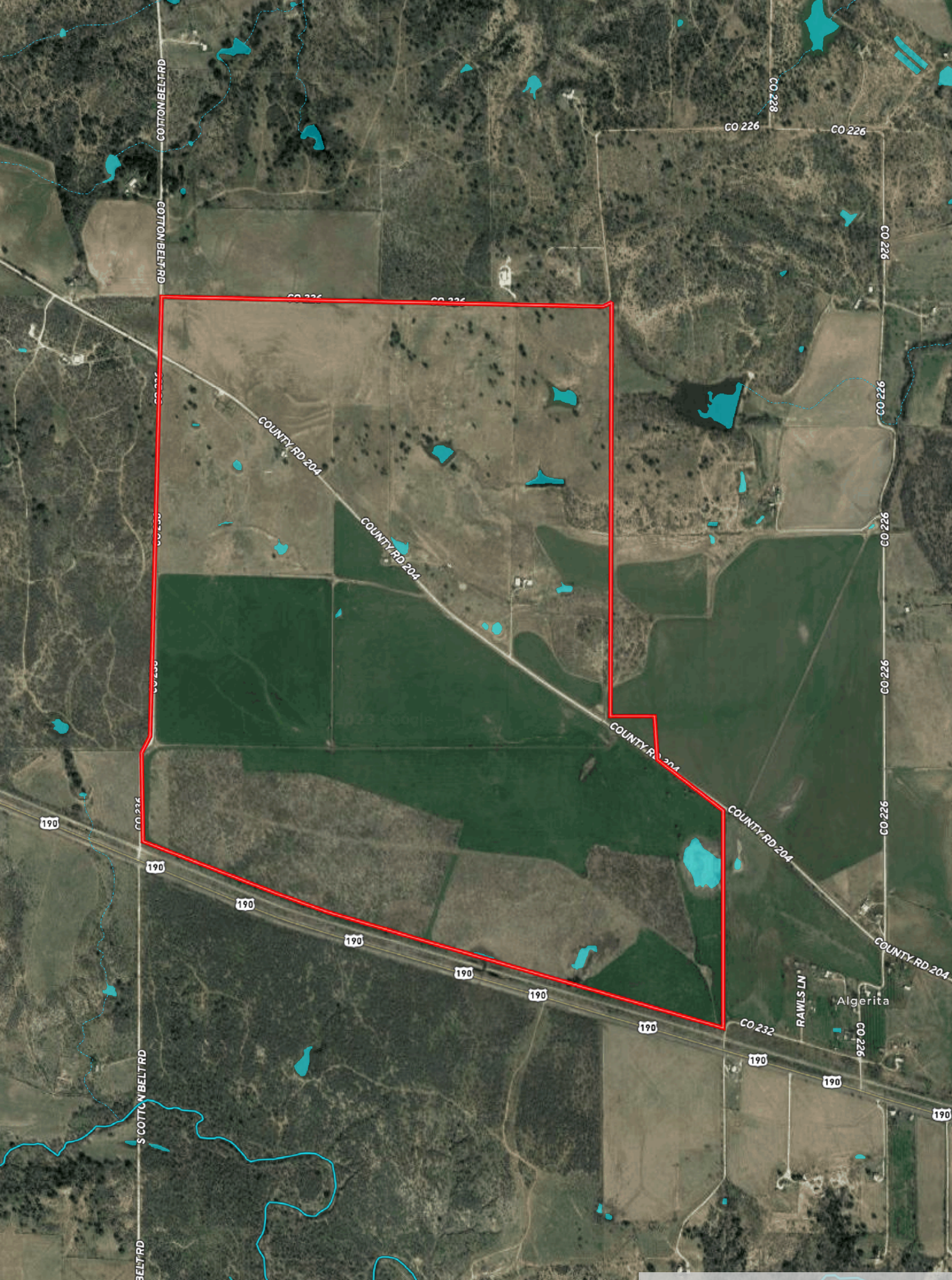
TOPOGRAPHY





IMPROVEMENTS







Ahrens Ranch & Wildlife,
providing Texas landowners
and potential buyers ranch
management services, wildlife
consulting, exotic game
management, and professional
commercial hunting.

432-386-7477
www.ahrensranchandwildlife.com



AHRENS
RANCH & WILDLIFE
(432) 386-7477
WWW.AHRENSRANCHANDWILDLIFE.COM
PROVIDING PROFESSIONAL HUNTING AND RANCH/WILDLIFE SERVICES

(254) 709-9418
www.lefence.com

LE FENCE SPECIALIZES IN:

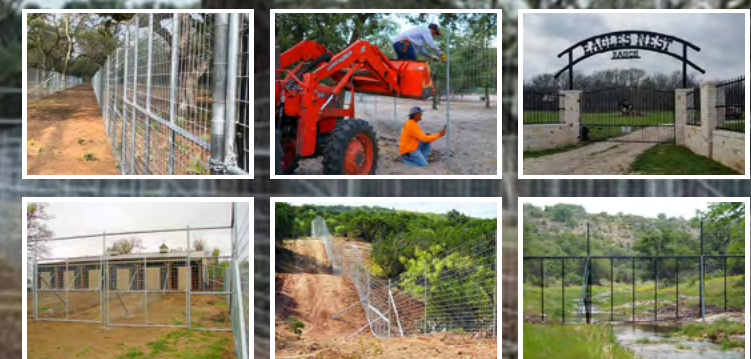
- High Game Fence

Land Services: Dozer and Dirt Work, Land
Clearing and Mulching, Roads and Trails

Other Farm and Ranch Applications

- Deer & High Game Fence
- Ranch Entries and Gates
- Water Gap Solutions
- Hog & Predator Control
- Barbed Wire
- Specialty AG Fencing

**YOUR FENCE CONTRACTOR
FOR TEXAS AND BEYOND.**





BECCA VIZZA

210.995.0129

RVizza@TexasRanchSalesLLC.com



SCAN FOR CONTACT CARD



TEXASRANCHSALES.COM


830.741.8906

Shown by appointment only with Texas Ranch Sales, LLC. Buyers brokers must be identified on first contact and must accompany buying prospect on first showing to be allowed full fee participation. If this condition is not met, fee participation will be at the sole discretion of Texas Ranch Sales, LLC.

Ranch. financing made simple



HONDO OFFICE

 NMLS493828 | 830.741.2040 | capitalfarmcredit.com



Brandy Bendele NMLS835199

Ben D. Wilson NMLS2058042

Disclaimer: Although the Broker or Agent has used reasonable care in obtaining data, this material is submitted without representation, warranty, or guarantees, and is subject to errors and omissions. Moreover, all information is subject to changes by the owner as to price or terms, to prior lease, to withdrawal of the property from the market, and to other events beyond the control of the Broker.