

HIDDEN RANCH

5,110± ACRES | CHAVES COUNTY, NEW MEXICO



TEXAS RANCH SALES, LLC
830.741.8906
Info@TexasRanchSalesLLC.com
TexasRanchSales.com

ESTD **TRS** 2000
TEXAS RANCH SALES
• TEXAS IS OUR BRAND •

HIDDEN RANCH

5,110± ACRES | CHAVES COUNTY, NEW MEXICO

Hidden Ranch spans 5,110± acres in the cattle ranching region of Chaves County, New Mexico. Located 15± miles west of Elida, this property combines productive grazing land, reliable water resources, and well-maintained improvements, making it ideal for ranching and recreational use. The ranch's diverse terrain features rolling hills and mesas, with beautiful views from its high elevations. This property is a rare opportunity for those seeking a working cattle operation or a private rural retreat.



- ELIDA, NEW MEXICO
- 3,855± DEEDED ACRES, 640± LEASED ACRES & 615± ACRES OF FREE-USE LAND
- ROLLING TERRAIN WITH STEEP CANYONS, MESAS, & BLUFFS
- 3,800± FT ELEVATIONS
- 768± SQ/FT HUNTING CABIN
- 2,100± SQ/FT BARN WITH A LEAN-TO
- PIPE CATTLE PENS
- WELL-MAINTAINED FENCES
- WATER WELL WITH A SUBMERSIBLE PUMP & 4 WINDMILLS WITH WATER TANKS
- 2 SPRINGS & 4 PONDS
- CARRYING CAPACITY OF 55± ACRES/AU
- ABUNDANT WILDLIFE
- HUNTING BLINDS & FEEDERS



SCAN TO VIEW WEBSITE



SCAN TO VIEW WATCH VIDEO

HUNTING CABIN



OTHER IMPROVEMENTS



LAND & WATER

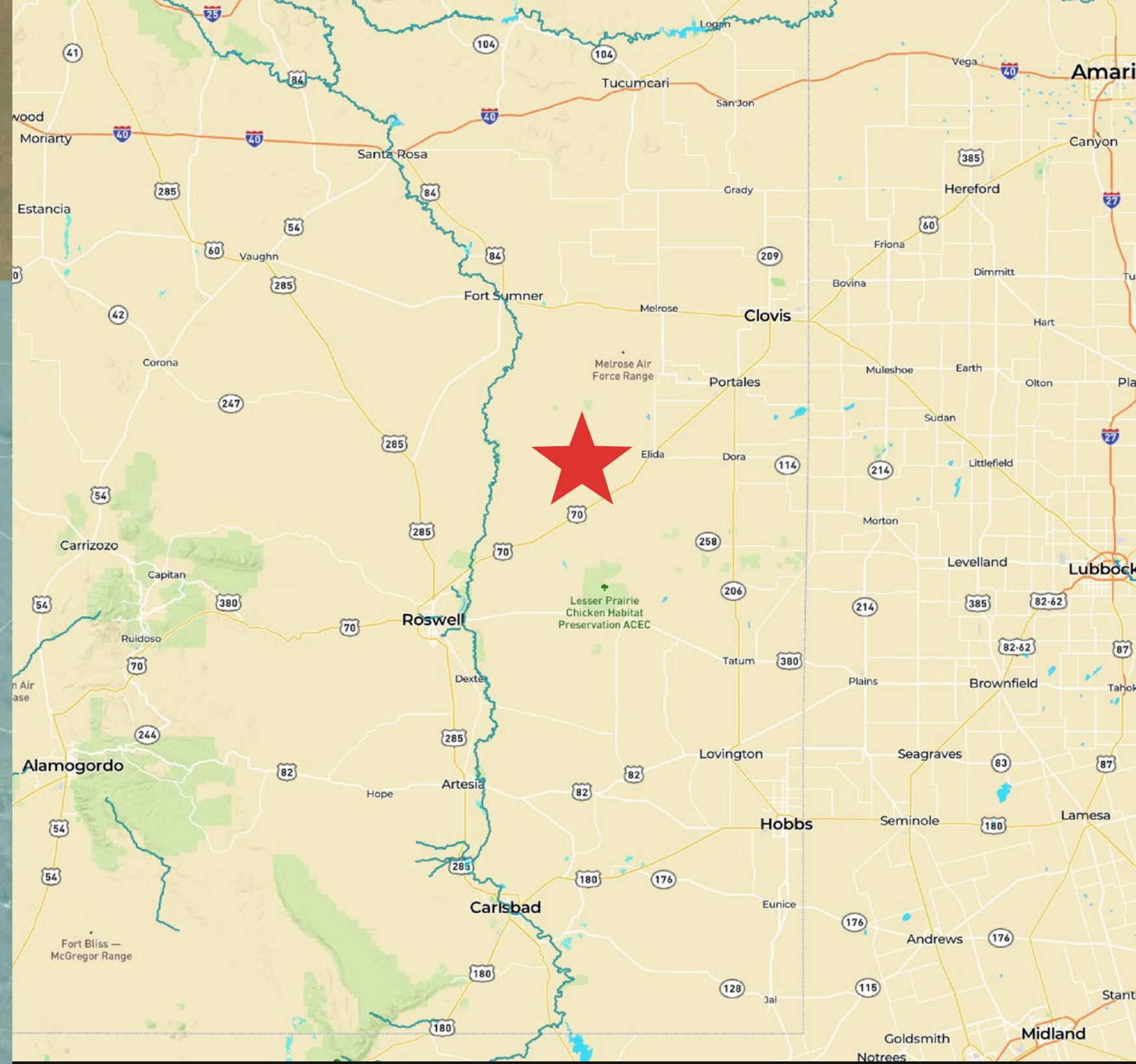
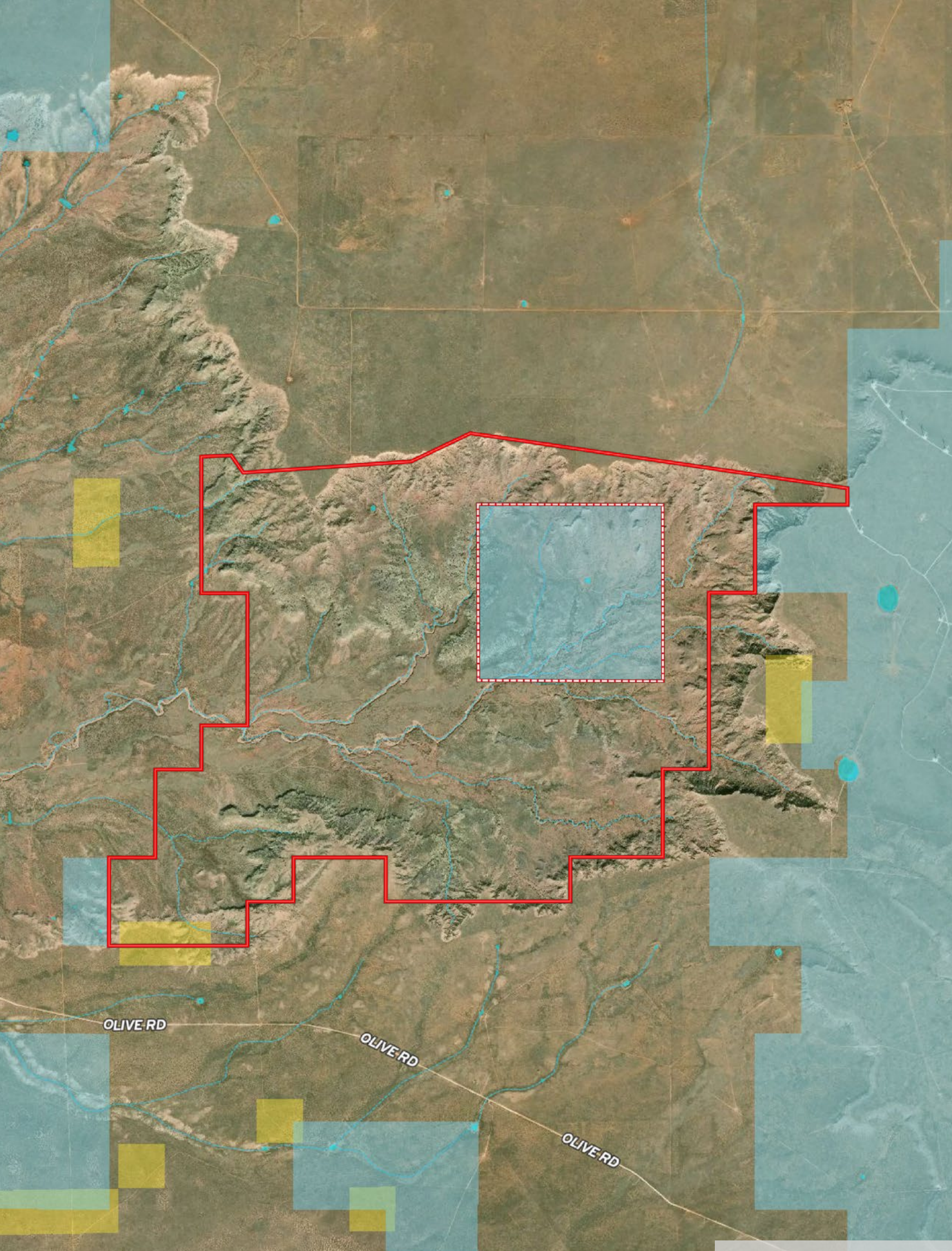






HUNTING & WILDLIFE





Ahrens Ranch & Wildlife,
providing Texas landowners
and potential buyers ranch
management services, wildlife
consulting, exotic game
management, and professional
commercial hunting.

432-386-7477
www.ahrensranchandwildlife.com



0 2000 4000 6000





SHELDON GROTHAUS

210.854.5833

Sheldon@TexasRanchSalesLLC.com



SCAN FOR CONTACT CARD



Shown by appointment only with Texas Ranch Sales, LLC. Buyers brokers must be identified on first contact and must accompany buying prospect on first showing to be allowed full fee participation. If this condition is not met, fee participation will be at the sole discretion of Texas Ranch Sales, LLC.


TEXASRANCHSALES.COM

830.741.8906

Ranch. financing made simple



HONDO OFFICE

 NMLS493828 | 830.741.2040 | capitalfarmcredit.com



Brandy Bendele NMLS835199
Ben D. Wilson NMLS2058042

Disclaimer: Although the Broker or Agent has used reasonable care in obtaining data, this material is submitted without representation, warranty, or guarantees, and is subject to errors and omissions. Moreover, all information is subject to changes by the owner as to price or terms, to prior lease, to withdrawal of the property from the market, and to other events beyond the control of the Broker.